



ROLLER BRAKE TESTERS FOR ALL VEHICLE CLASSES

BT 1550

Description

The test-lane-compatible roller brake tester BT 1550 is designed for the brake testing of cars, vans and light-duty trucks with axle loads of up to 8.0 t. Its standard test speed of 5 km/h complies with the country-specific legal requirements for testing cars and light-duty trucks. Its multi-analogue display, with two pointer gauges, enables the display of brake, side-slip and shock absorption test results.

Scope of delivery

- Automatic start-up monitoring supplied as standard to avoid tyre damage
- Delayed automatic switch-on after entering the tester
- Automatic slip cut-off with pointer stop and automatic restart already included as standard
- Automatic cut-off after exiting the tester
- Single-wheel switching for differentiated consideration of each wheel
- Electronic strain gauge system
- Self-supporting, closed roller set
- Roller surface welded (Optional: free plastic coating)
- Star-delta circuit to avoid high inrush currents
- Lockable main switch
- TÜV approved
- Splash-proof motors work reliably, even under high-stress environmental influences
- Varnished with high-quality powder coating: Anthracite Grey, RAL 7016
- Multi-analogue display with two pointer indicators (Diameter: 2 x 350 mm) and an integrated switch and electrical cabinet Display option for brake tester, wheel arch tester and shock absorption tester
- Difference display (LED bar) for evaluating the difference in braking force, shock absorption and the deviation in wheel arch



Roller set with preparation for weighing device



MCD 2000 communication desk

Display and PC control unit with convenient user guidance and extensive Databases for professional use.



TECHNICAL DATA

DISPLAY / CONTROL

Display unit	Multi-analogue display with 2 x Ø 350 mm
Control	Integrated control board
Display area	0 – 16 kN
Dimensions display unit (H x D x W)	910 x 300 x 870 mm
Weight	ca. 60 – 100 kg
Interface connection	RS 232 for printer or pc use

ROLLER SET

Roller set	Serie MBT 3000
Axle load (can be driven over)	8,0 t
Motor power	2 x 5,5 kW
Testing speed	5 km/h
Testing width	870 / 2800 mm
Roller diameter	202 mm
Roller axle distance	400 mm
Power supply	3 x 400V/N/PE 50/60 Hz
Fuse	35 A slow blow
Bearings	water proof, maintenance free
Corrosion protection	powder coating
Dimensions roller set (H x D x W)	280 x 680 x 2925 mm
Dimensions roller set (H x D x W)	400 x 800 x 3000 mm
Weight	ca. 500 kg

BT 1610

Description

The roller brake tester BT 1610 is designed for the brake testing of trucks with axle loads of up to 13.0 t. Its standard split design for pit installation ensures a high level of flexibility from passenger cars to trucks. The display can be designed as multi-analogue display or digital version with PC up to the extension to a complete test lane.

Scope of delivery

- Automatic start-up monitoring supplied as standard to avoid tyre damage
- Delayed automatic switch-on after entering the tester
- Automatic slip cut-off with pointer stop and automatic restart already included as standard
- Automatic cut-off after exiting the tester
- Single-wheel switching for differentiated consideration of each wheel
- Electronic strain gauge system
- Self-supporting, closed roller set
- Rear roller raised by 40mm
- Roller surface welded (Optional: free plastic coating)
- Star-delta circuit to avoid high inrush currents
- Splash-proof motors work reliably, even under high-stress environmental influences
- TÜV approved
- Lockable main switch
- Varnished with high-quality powder coating: Anthracite Grey, RAL 7016
- Multi-analogue display with two pointer indicators (Diameter: 2 x 350 mm) and an integrated switch and electrical cabinet. Display option for brake tester, wheel arch tester and shock absorption tester
- Difference display (LED bar) for evaluating the difference in braking force, shock absorption and the deviation in wheel arch



Roller set without preparation for weighing device



MCD 2000 communication desk

Display and PC control unit with convenient user guidance and extensive Databases for professional use.



TECHNICAL DATA

DISPLAY / CONTROL

Display unit	Multi-analogue display with 2 x Ø 350 mm
Control	Integrated control board
Display area	0 – 40 kN
Dimensions display unit (H x D x W)	910 x 300 x 870 mm
Weight	ca. 60 – 100 kg
Interface connection	RS 232 for printer or pc use

ROLLER SET

Axle load (can be driven over)	13 t / 15 t*
Motor power	2 x 9 kW / 11 kW*
Testing speed	2,3 km/h (2,3 / 4,6 km/h)*
Roller length	1000 mm
Roller diameter	202 mm
Roller axle distance	430 mm
Power supply	3 x 400V/N/PE 50/60 Hz
Fuse	60 - 63 A slow blow
Bearings	water proof, maintenance free
Corrosion protection	powder coating
Dimensions roller set (H x D x W)	(each side) 550 x 1043 x 1236 mm
Weight (2 pc.)	ca. 1540 kg

* Option

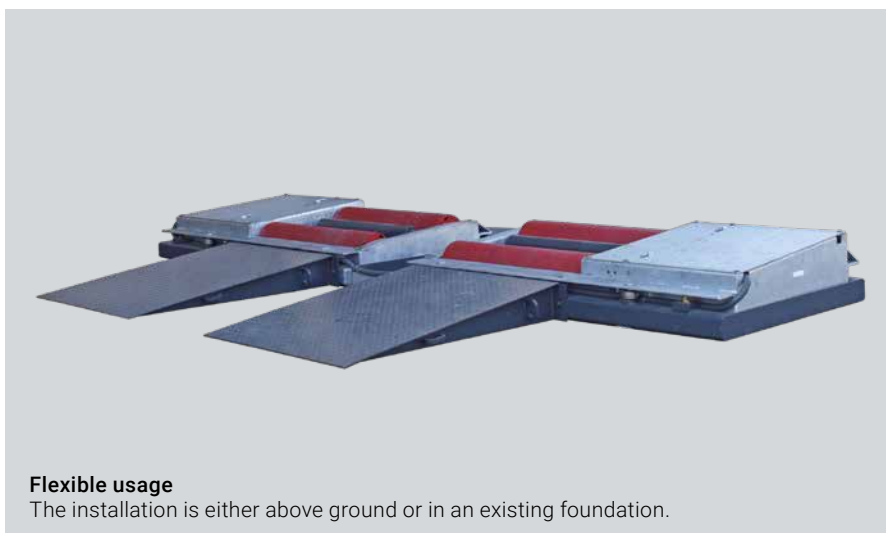
BT 1840

Description

Appropriate test equipment is required for brake testing of vehicles with large wheel dimensions in connection with variable track widths. Our BT 1840 was developed especially for these requirements and is distinguished by its specially designed features. Whether agricultural vehicles or special vehicles of any kind: for the BT 1840 there are (almost) no limits. trucks The display can be designed as multi-analogue display or digital version with PC.

Scope of delivery

- Automatic start-up monitoring supplied as standard to avoid tyre damage
- Delayed automatic switch-on after entering the tester
- Automatic slip cut-off with pointer stop and automatic restart already included as standard
- Automatic cut-off after exiting the tester
- Single-wheel switching for differentiated consideration of each wheel
- Electronic strain gauge system
- DC brake for the rollers- easy drive on and off
- Self-supporting, closed roller set
- Rear roller raised by 50mm
- Roller surface welded (Optional: free plastic coating)
- Star-delta circuit to avoid high inrush currents
- Splash-proof motors work reliably, even under high-stress environmental influences
- TÜV approved
- Lockable main switch
- Varnished with high-quality powder coating: Anthracite Grey, RAL 7016
- Multi-analogue display with two pointer indicators (Diameter: 2 x 350 mm) and an integrated switch and electrical cabinet Display option for brake tester, wheel arch tester and shock absorption tester
Korrosionsschutz: Pulverbeschichtung
- Difference display (3 Digits) for evaluating the difference in braking force, shock absorption and the deviation in wheel arch



MCD 2000 communication desk

Display and PC control unit with convenient user guidance and extensive Databases for professional use.



TECHNICAL DATA

DISPLAY / CONTROL

Display unit	Multi-analogue display with 2 x Ø 350 mm
Control	Integrated control board
Display area	0 – 40 kN
Dimensions display unit (H x D x W)	910 x 300 x 870 mm
Weight	ca. 60 – 100 kg
Interface connection	RS 232 for printer or pc use

ROLLER SET

Axle load (can be driven over)	18 t
Motor power	2 x 11 kW
Testing speed	3 km/h
Testable wheel diameter	800 – 2200 mm
Testing width min / max	400 / 3600 mm
Roller length	1600 mm
Roller diameter	265 mm
Roller axle distance	685 mm
Power supply	3 x 400V/N/PE 50 Hz
Fuse	63 A slow blow
Bearings	water proof, maintenance free
Corrosion protection	powder coating
Dimensions roller set (H x D x W)	400 x 1350 x 2685 mm
Weight (2 pc.)	ca. 2400 kg

BT 1640

Descripton

Recommended by vehicle manufacturers and used by international testing organizations in continuous operation. MBT 7000 series testers are the world's most commonly used brake testers and are used for truck diagnostics in particular. The optimized roller set dimensions make these benches versatile for both truck and car testing. These test benches can be upgraded with many accessories and offer a wide range of diagnostics options, even when vehicle throughput is high. The display design can be either analog or a digital version with a PC and can be extended to include a test lane.

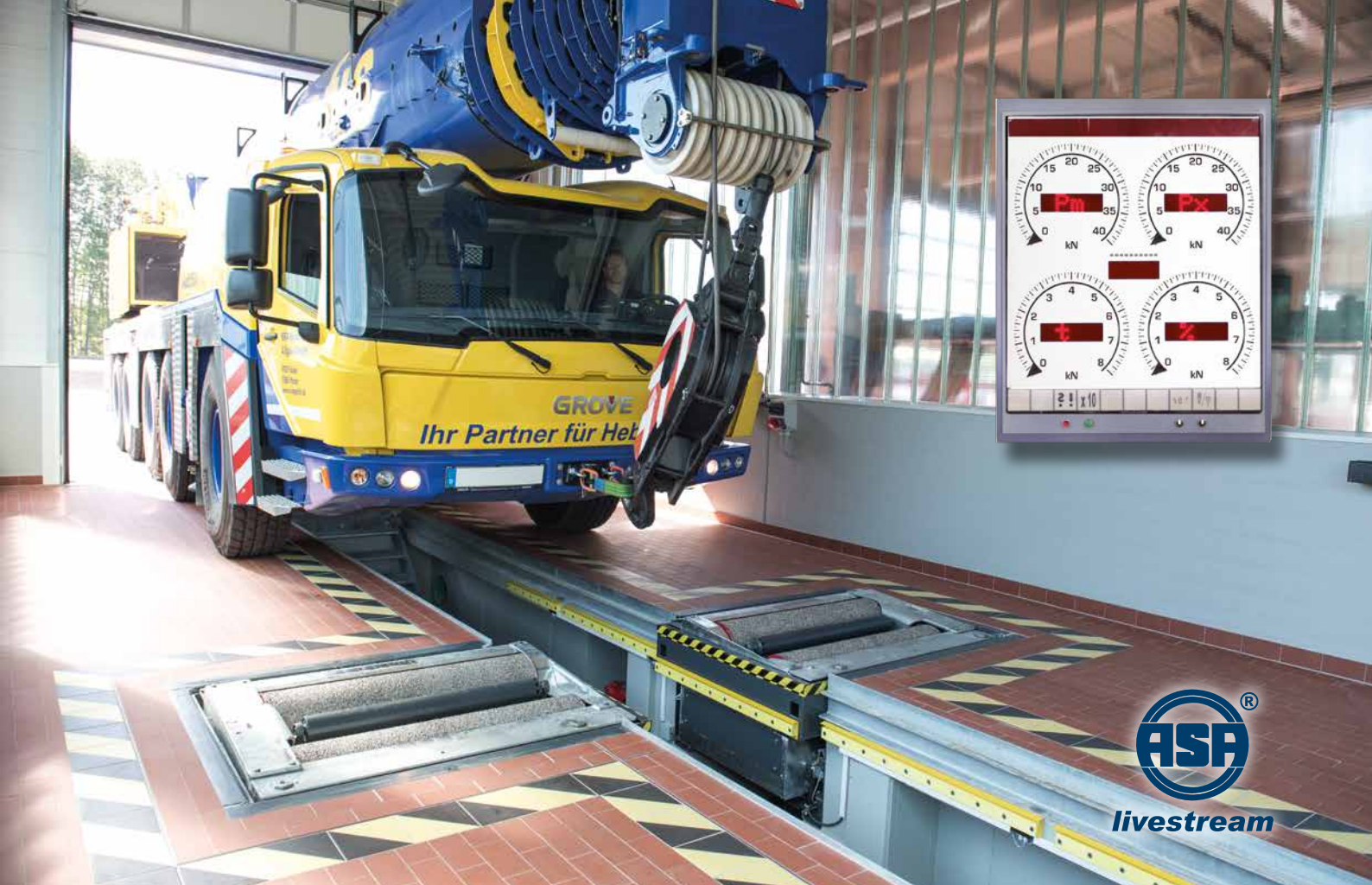
Scope of delivery

- Automatic start-up monitoring supplied as standard to avoid tyre damage
- Delayed automatic switch-on after entering the tester
- Automatic slip cut-off with pointer stop and automatic restart already included as standard
- Automatic cut-off after exiting the tester
- Single-wheel switching for differentiated consideration of each wheel
- Electronic strain gauge system
- DC brake for the rollers- easy drive on and off
- Self-supporting, closed roller set
- Rear roller raised by 50mm
- Roller surface welded (Optional: free plastic coating)
- Star-delta circuit to avoid high inrush currents
- Splash-proof motors work reliably, even under high-stress environmental influences
- TÜV approved
- Lockable main switch
- Varnished with high-quality powder coating: Anthracite Grey, RAL 7016
- Multi-analogue display with two pointer indicators (Diameter: 4 x 350 mm) and an integrated switch and electrical cabinet Display option for brake tester, wheel arch tester and shock absorption tester
- Difference display (3 Digits) for evaluating the difference in braking force, shock absorption and the deviation in wheel arch



MCD 2000 communication desk

Display and PC control unit with convenient user guidance and extensive Databases for professional use.



TECHNICAL DATA

DISPLAY / CONTROL

Display unit	Multi-analogue display with 4 x Ø 350 mm
Control	Integrated control board
Display area	0 – 40 kN
Dimensions display unit (L x D x W)	910 x 300 x 870 mm
Weight	ca. 60 – 100 kg
Interface connection	RS 232 for printer or pc use

ROLLER SET

Axle load (can be driven over)	18 t / 20 t*
Motor power	2 x 11 kW / 16 kW*
Testing speed	3 km/h (3 / 6 km/h*)
Roller length	1150 mm (1600 mm*)
Roller diameter	265 mm
Roller axle distance	475 mm
Power supply	3 x 400V/N/PE 50/60 Hz
Fuse	63 - 80 A slow blow
Bearings	water proof, maintenance free
Corrosion protection	powder coating
Dimensions roller set (L x D x W)	700 x 1150 x 1450 mm
Weight (2 pc.)	ca. 1700 kg

* Option

MATRIX ACCESSORIES

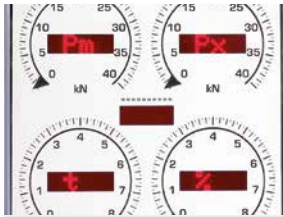
Description	Art-No.	BT 1550	BT 1610	BT 1840	BT 1640
Roller set is split for assembly in an installation pit	VZ 930040	0	X	X	X
Weighing device	see price list	0	0	0	0
Roller heating	see price list	0	0	0	0
Hydraulic weight simulator	see price list	0	0	0	0
Roller cover, detachable	see price list	0	0	0	0
Lifting or lowering threshold	VZ 930041	0	-	-	-
Pit casing	VP 930057	0	-	-	-
Plastic-coated roller surface	VZ 935110	0	0	0	0
Level roller set design	see price list	X	0	-	0
Roller set liftable	see price list	-	0	-	0
Angle iron frame	see price list	-	0	0	0
Rotation and measurement direction can be (manually) switched	VZ 935132	0	0	0	0
Rotation and measurement direction can be (remotely) switched	VZ 935133	0	0	0	0
Rotation and measurement direction can be (remotely) switched	VZ 955257	0	0	0	0
Wall bracket for display cabinet	VZ 955256	0	0	0	0
Simultaneous display MSA CLASSIC	VZ 950055	0	0	0	0
Differential display with 3-digit LED bar evaluation	VZ 955252	0	X	X	X
Display module VARIODATA	VZ 955253	0	0	0	0
LED moving text with user guidance	VZ 955254	0	0	0	0
Remote control radio, RECO 1	VZ 910153	0	0	0	0
Remote control radio, FFB 3	VZ 910154	0	0	0	0
Cabinet heating	VZ 955080	0	0	0	0
Starter set radio-controlled pressure converter	VZ 980035	0	0	0	0
Radio pressure transducer, pneumatic	VZ 980029	0	0	0	0
Radio pressure transducer, hydraulic	VZ 980028	0	0	0	0
Flash light with horn	VZ 955071	0	0	0	0
DC brake (electric drive-off aid)	VZ 935113	0	0	0	0
Two test speeds	VZ 935077	-	0	-	0
Pit support system GSQ	VP 155009	0	0	0	0

For further accessories please see the current price list

X series
 0 Option
 - not available



Digital/optical differential display VZ 955252



VARIODATA-Display VZ 955253



Wall bracket VZ 955256



Flash light with horn VZ 955071



Support Column for display cabinet VZ 955257



Special voltage 3 x 230 V see price list



Starter set radio-controlled pressure converter VZ 980035



Radio pressure transducer, pneumatic VZ 980029



Radio pressure transducer, hydraulic VZ 980028



Radio touchscreen FTS 2018 VZ 955295



Remote control radio FFB 3 VZ 910154



Remote control radio RECO 1 VZ 910153



Pedal force meter PFM 1000 VP 990434



Installation frame see price list



Plastic-coated roller surface VZ 935110



Rotation and measurement direction VZ 935072



Operating hours counter VZ 955014



4WD regulation set VZ 990181



Hydraulic weight simulator VZ 935033



Liftable roller set VZ 935169 / VZ 935170



Strengthened drive motors see price list



GSQ pit support system VZ 155009



Two test speeds VZ 935077



Roller cover VZ 935140 / VZ 935141



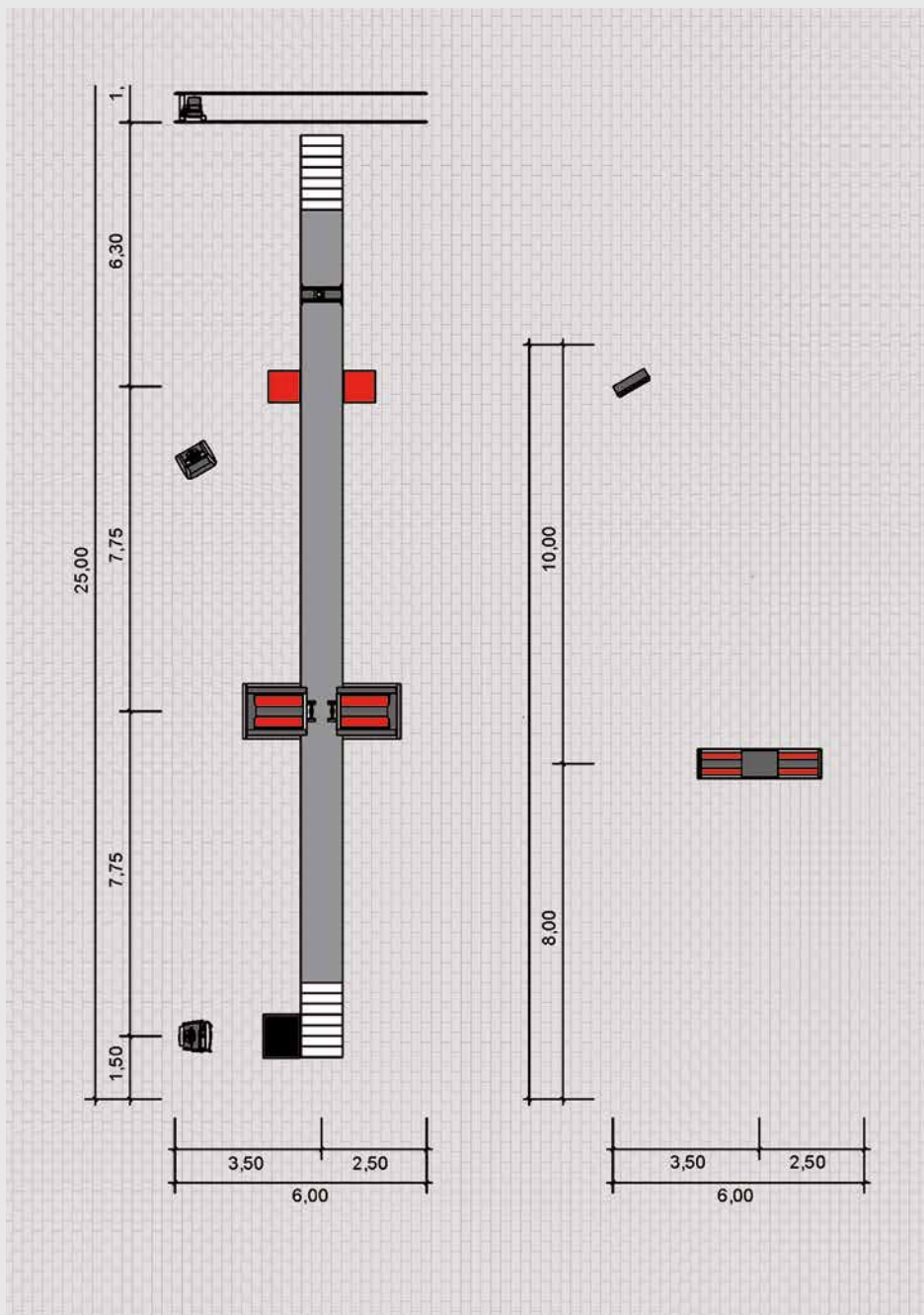
Weighing device static / dynamic



Roller heating VZ 935006



Calibration tool VZ 975887



Load simulator MLS 2100/2200
2-way HD cylinder for fixed or move-able (on rails) floor mounting



Roller set lifting
Hydraulische Rollensatzanhebung zur Verlagerung der Achslast auf die zu prüfende Achse.



Truckbay - the prefabricated pit
Your customized inspection and maintenance pit for trucks and buses.



Ground anchor
For holding the vehicle frame or the axle during lifting.